

H

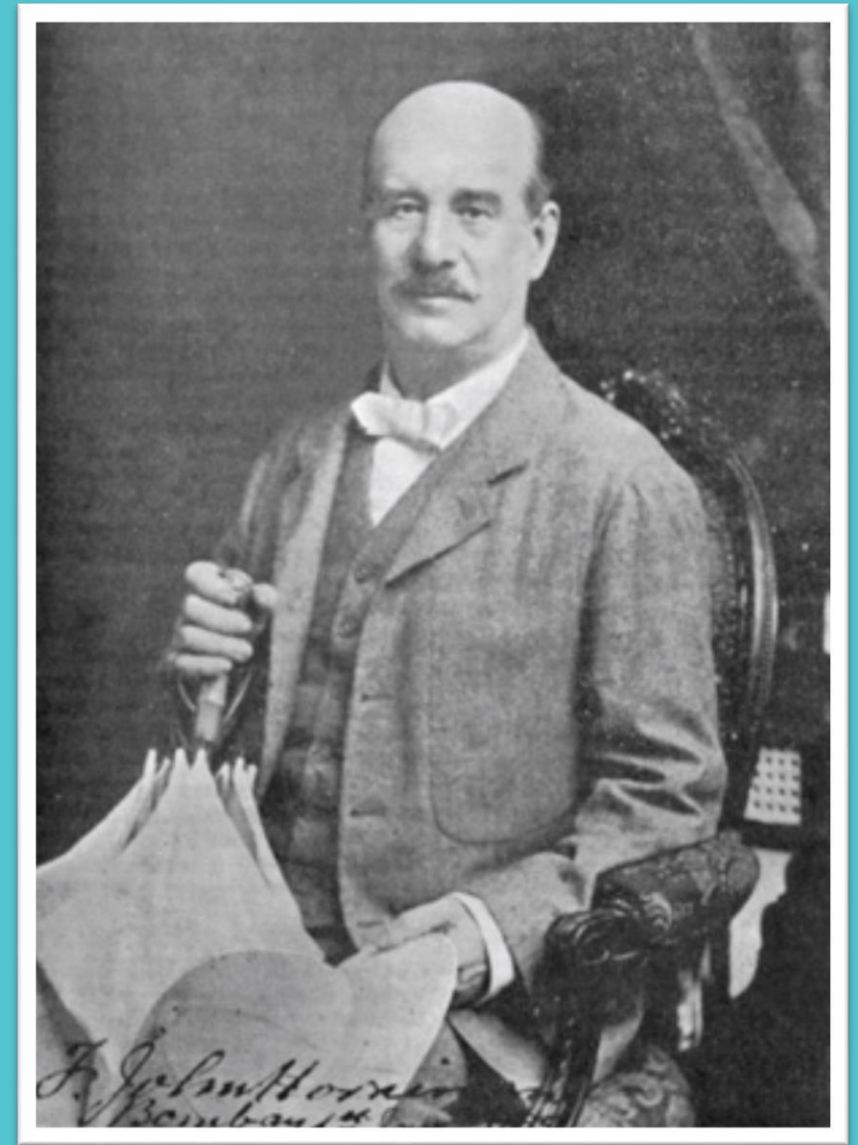
‘For the Purposes of Education’

Eleanor Hamblen - Schools Learning Officer
ehamblen@horniman.ac.uk

Education in our foundation

“...recreation, instruction and enjoyment.”

A long history of object handling:



Frederick Horniman, 1835 - 1906

Learning in museums now:

- Responsible and reflective
- In consultation
- Reflecting concerns about social justice, inequalities, climate and ecological crisis
- Accountable
- Learning together... we are not experts

H Schools Learning

Our 'core' offer

Pricing

Mainstream State schools: £90 including VAT, £75 excluding VAT

Private/independent schools: £129.60 including VAT, £108 excluding VAT

SEND schools and groups: £45 including VAT, £37.25 excluding VAT

We offer a bursary scheme for schools that meet a set criteria.



Workshops

- 45-90 minutes
- Over 35 different sessions
- Outdoor exploration
- Indoor object handling workshops (including taxidermy, textiles, musical instruments, ancient artefacts and more!)
- Curator Q&As
- Curriculum/topic linked
- Developed and delivered by Schools Learning Officers
- Bursary scheme available

Self-led visits

- Unguided exploration
- Education rates/discounts or free visits
- Print resources available to support visit

What do we do?

- Object Handling Workshops
- Outdoor Learning
- Self-led visits
- Virtual workshops
- Resources (with connected communities)
- SEND/PMLD
- Home education
- Careers and skills development
- Co-production
- Object loans
- Teacher CPD
- Museum Clubs



Art Portfolio

From traditional art and textiles from around the world to natural forms, pupils will have a fantastic opportunity to develop their still life sketching skills and form ideas and concepts around their own work. Pupils will have the chance to handle and closely study the objects, repositioning and arranging them as they choose, whilst exploring new textures and forms and being inspired by the stories behind them.

Previous topics have included:

- Natural Forms
- Disguise
- Masks
- Work, Rest and Play
- World Cultures and
- Manmade.

Please bring your sketchbooks and pencils with you.

Continue to be inspired by our Museum's collections (Natural History, Musical Instruments and World Gallery) and Gardens – all of which are free to visit. See how other artists have been inspired by our Natural History collections in our changing art installations Inspired by Nature at the entrance of the [Natural History Gallery](#).

Textiles



This session will introduce participants to different textile techniques used around the world. From resist dye methods such as batik which originated in Asia to printing methods like those used to create Adinkra cloth in West Africa.

Participants will then have the opportunity explore and, in some cases, try on a range of textiles used for everyday purposes, special occasions and performances. Having learnt more about these items of clothing and their cultural significance, pupils will have time to sketch the objects they are most interested in.

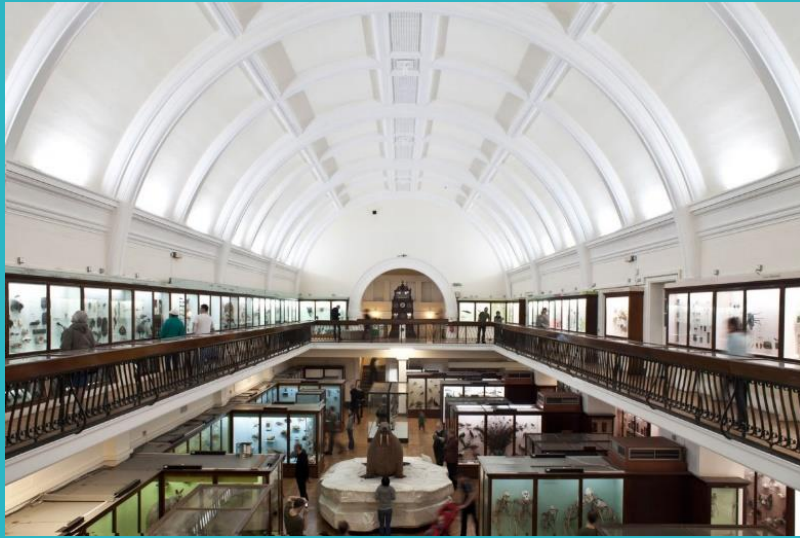
To finish, we will discuss textiles as a way of expressing cultural identity and how this can be affected by colonialism and globalisation. We will also consider the environmental impact of the fashion industry and ideas for improving sustainability.

The Horniman connects us all with global cultures and the natural environment, encouraging us to shape a positive future for the world we all share.



Horniman Museum Reset Agenda:

1. Engage wider audiences through programming and communications
2. Diversify staff and volunteers
3. Consult people and work in partnership
4. Address the history of the Horniman business and institutional collecting
5. Enhance our digital provision
6. Make the Horniman greenhouse gas neutral and more biodiverse
7. Maximise income generation to support this agenda



Climate Emergency

Nature + Love will enhance the visitor experience and open up previously under-used areas of the Horniman site by creating three exciting new attractions:

- A **Nature Explorers Adventure Zone**, introducing a nature-themed play area and children's café, encouraging learning and wellbeing through exploration and play. This zone will also provide a new departure point for improved access to and better interpretation of the Horniman Nature Trail.
- A **Sustainable Gardening Zone** with new plant nursery and sustainable planting displays encouraging improved health and wellbeing. A horticultural hub will provide a space for community and learning programmes and adjacent to this an under-used part of the garden will be re-developed to improve access and planting.
- A redisplayed **Natural History Gallery and indoor Nature Explorers Action Zone**, exploring human understanding of and impact upon the planet, and supporting people to make changes on a local and personal level.

These capital works will be complemented by a range of **nature-focused partnerships** and a **programme of activities** to diversify our audiences.

Art in the Gardens: Ecology Boards



Led by

Art Fund_



Supported using public funding by
**ARTS COUNCIL
ENGLAND**

Rethinking Relationships



Community Knowledge and Research Space

Explore the Collections Community Knowledge and Research Space Anthropology Natural History Musical Instruments Archives Handling

Living About the collections

Welcome to the Community Knowledge and Research Space, a range of resources that will help you navigate the collections online and get you started on your own research journeys.

The information here has been made in collaboration with community members as part of the [African and Caribbean Collections Research Hub project](#) – but this space is for everyone.

We would like to extend an invitation for you to explore this area, and engage with the collections.

Here, you will find a range of resources that will help you navigate the collections online, and get you started on your own research journeys.

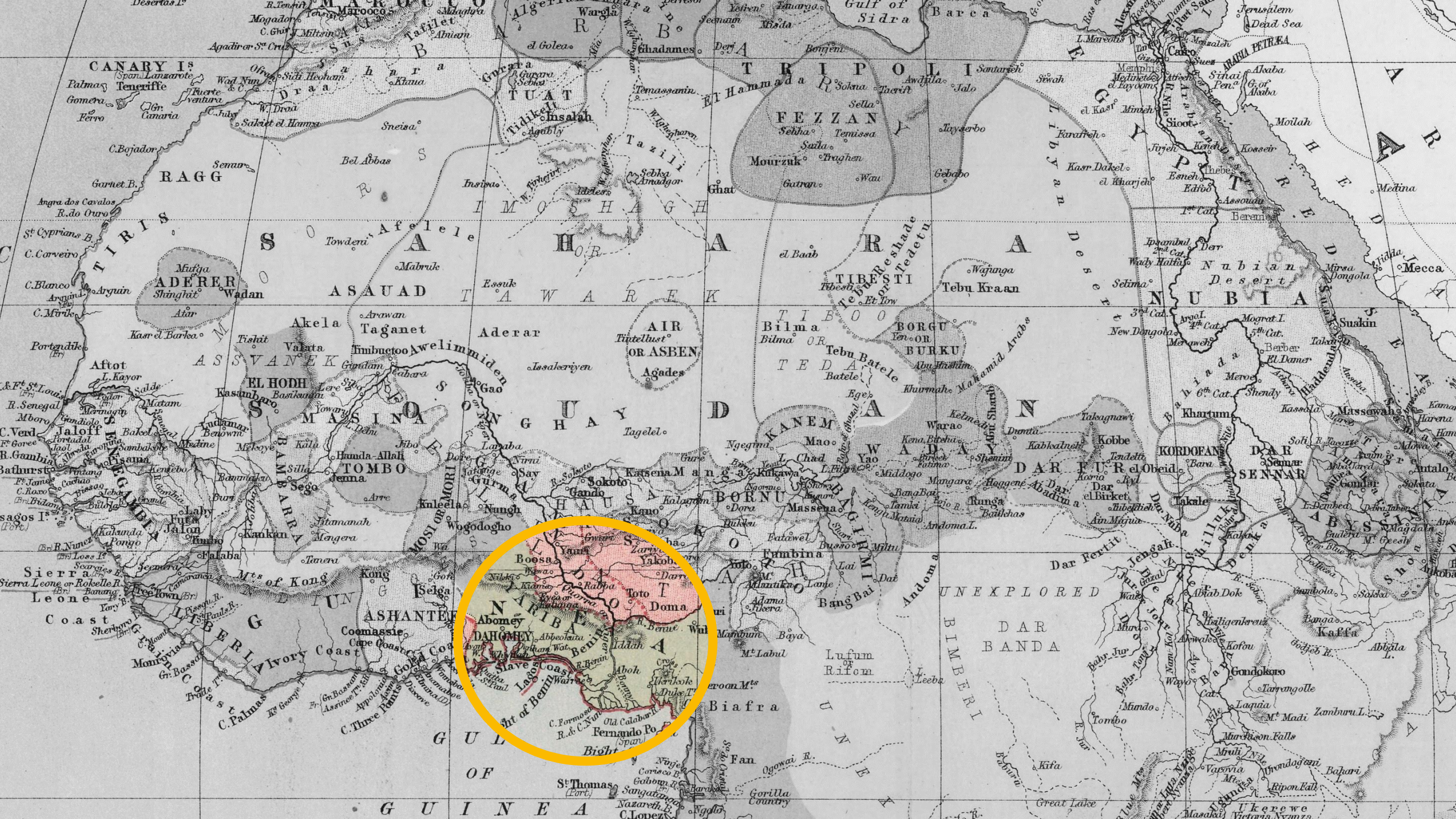
The Horniman is trying to find ways to:

- make it easier for community members to engage with the collections
- better understand these collections from multiple perspectives
- value lived experience as an important source of knowledge
- make informed decisions about what actions need to be taken in the future care of these collections.

These resources have been developed from the Community Action Research Toolkit developed by JC Niala, Johanna Zetterstrom-Sharp and Juma Ondeng, with support from Christyana Visk.

Addressing colonial legacies







Oba Ewuare II



London's Horniman Museum to return Benin Bronzes to Nigeria

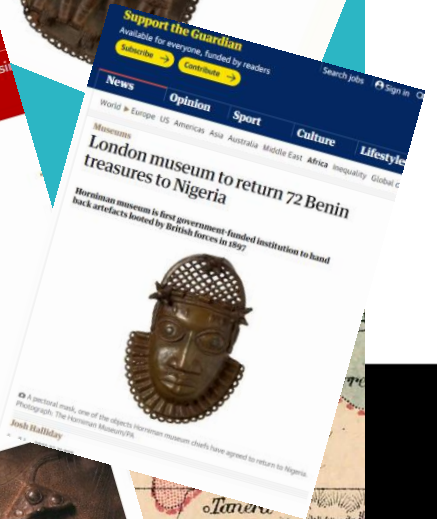
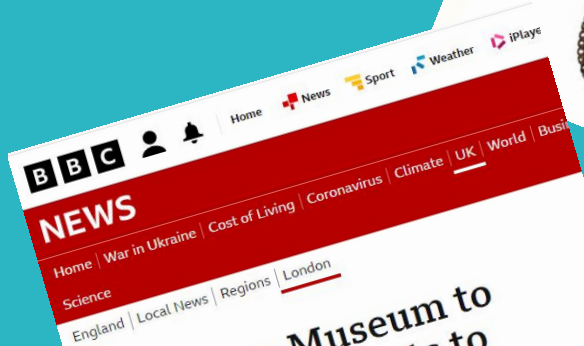


Horniman to return ownership of Benin bronzes to Nigeria

BACK TO ALL NEWS & STORIES By The Horniman Team 7 August 2022

Anthropology News Press release

The Horniman Museum and Gardens to return ownership of its Benin bronzes to Nigeria



Horniman Museum to return 72 artefacts to Nigeria



The Benin plaque of Chief Uwangué and Portuguese traders is one of the objects being returned to Nigeria



@Naks · 8h London's Horniman Museum to return the looted Benin Bronzes to Nigeria. ... See more

ngng (Contains music from:)

Add comment...

HORNIMAN MUSEUM AGREE TO RETURN STOLEN ARTEFACTS FROM NIGERIA IN THE 19TH CENTURY



Liked by galsface and 18,707 others
theshadeborough The London 'Horniman Museum' have today agreed to return stolen artefacts from the 19th century from the kingdom of Benin to the Nigerian government... more



H

Restitution: Who needs to be involved?

MUSEUM:

Curators,
Researchers,
Collections,
Visitor Experience,
Senior Managers

MUSEUM

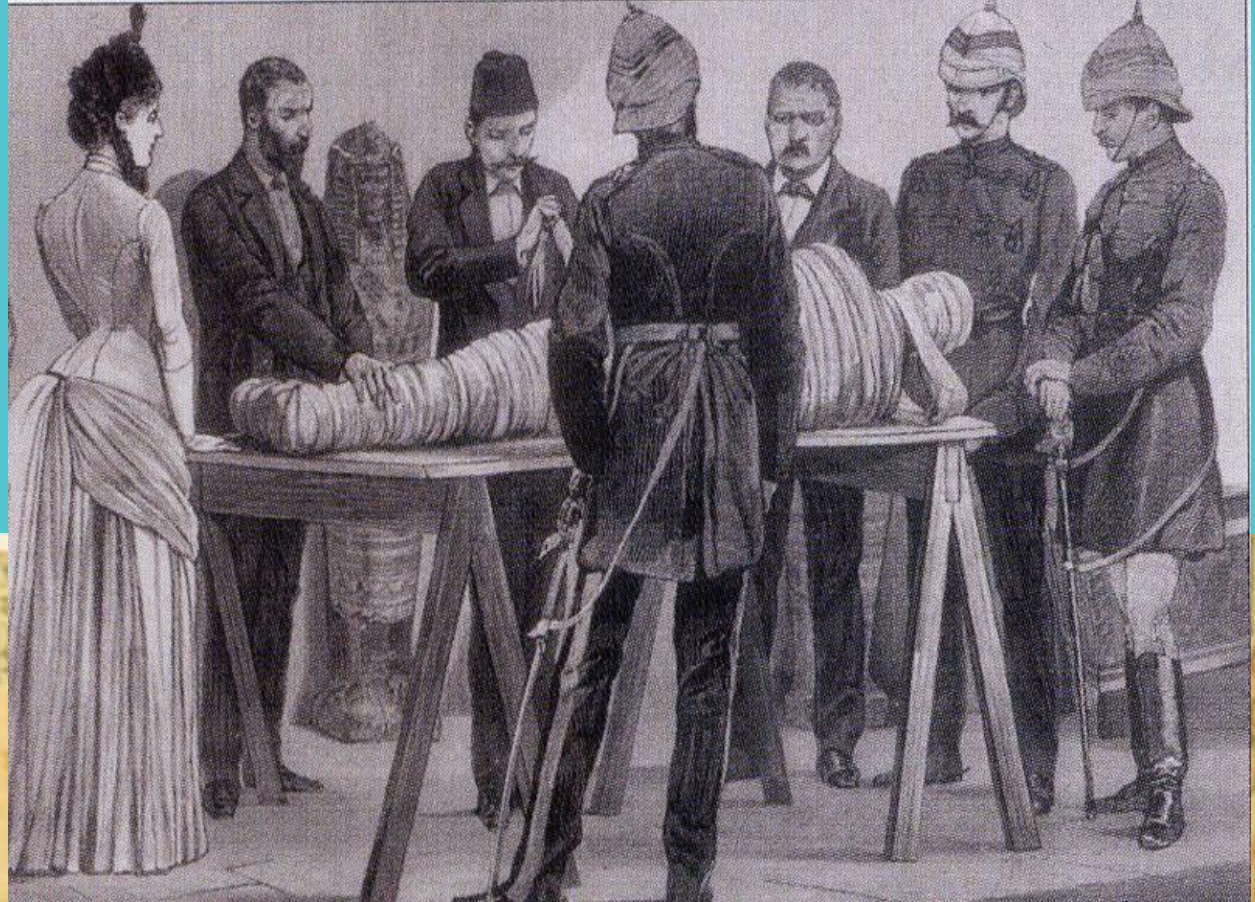
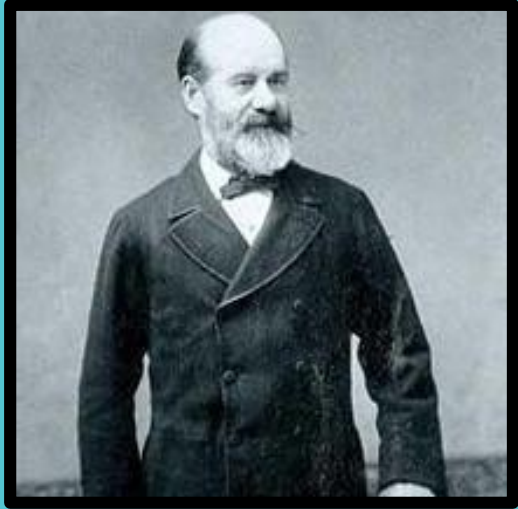
STAKEHOLDERS:

Communities,
Audiences,
Members and
Benefactors,
Trustees,
Lawyers,
UK Government

COLLECTION

STAKEHOLDERS:

Communities of
experience,
Nigerian Government,
Edo State,
Oba Ewuare II,
Academics,
Press



What happened to the rest of the sarcophagus?





[@ExcavatedEgypt](#) [@GawadHeba](#) [@Nasser_junior](#)



[@ExcavatedEgypt](#) [@GawadHeba](#) [@Nasser_junior](#)